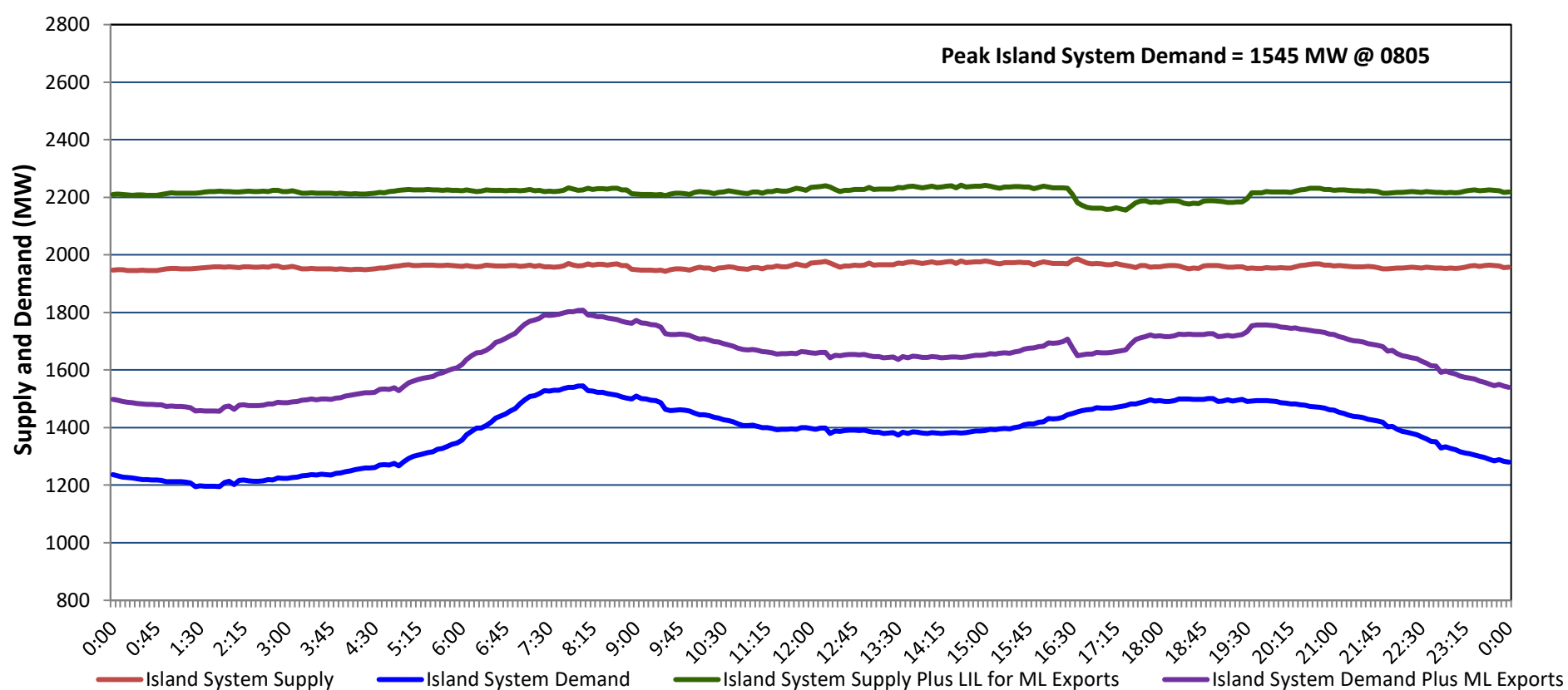


Newfoundland Labrador Hydro (NLH) Supply and Demand Status Report Filed Wednesday, March 05, 2025

Section 1 Island Interconnected System - Supply, Demand & Exports Actual 24 Hour System Performance For Tuesday, March 04, 2025



Island Supply Notes For March 04, 2025

- A** As of 1348 hours, February 19, 2025, Holyrood Unit 1 available at 105 MW due to forced derating (170 MW).
B As of 1848 hours, March 03, 2025, Labrador Island Link available at 450 MW due to planned derating (700 MW) - Monopole.
C At 0855 hours, March 04, 2025, Holyrood Unit 3 available at 130 MW due to forced derating (150 MW).

Section 2 Island Interconnected System - Supply, Demand & Outlook

Wed, Mar 05, 2025	Island System Outlook ²	Seven-Day Forecast	Island System Daily Peak Demand (MW)	
			Forecast ⁸	Adjusted ⁶
Island System Supply: ⁴	1,976 MW	Wednesday, March 5, 2025	1,475	1,368
NLH Island Generation: ^{3,7}	1,610 MW	Thursday, March 6, 2025	1,400	1,294
NLH Island Power Purchases: ⁵	145 MW	Friday, March 7, 2025	1,215	1,111
NP and CBPP Owned Generation:	215 MW	Saturday, March 8, 2025	1,295	1,190
LIL/ML Net Imports to Island: ⁹	6 MW	Sunday, March 9, 2025	1,300	1,195
		Monday, March 10, 2025	1,430	1,323
7-Day Island Peak Demand Forecast:	1,490 MW	Tuesday, March 11, 2025	1,490	1,383

Island Supply Notes For March 05, 2025

- Notes: 1. Generation outages for running and corrective maintenance are included. These are not unusual for power system operations. They generally do not impact customer supply. Hydro schedules outages to system equipment whenever possible to coincide with periods when customer demands are low and sufficient supply reserves are available. However, from time to time equipment outages are necessary and reserves may be impacted.
 2. As of 0800 Hours.
 3. Gross continuous unit output.
 4. Gross output from all Island sources (including Note 3).
 5. NLH Island Power Purchases include: ML Imports, Exploits Generation, Rattle Brook, Star Lake, Wind Generation and capacity assistance (when applicable).
 6. Adjusted for interruptible load and the impact of voltage reduction when applicable.
 7. Due to limitations inherent in the design of combustion turbines, the output of combustion turbines may be reduced in the event that ambient temperatures exceed the threshold required for full rated output. This threshold is dependent on the design of each turbine.
 8. Does not include ML Exports.
 9. LIL Import sunk in the Island System. Actual LIL flows will be restricted by various system conditions including, but not limited to, Island Load, ML Exports and Avalon Unit status.

Section 3 Island Peak Demand and Exports Information Previous Day Actual Peak and Current Day Forecast Peak

Tue, Mar 04, 2025	Island Peak Demand ¹⁰	8:05	1,545 MW
	Exports at Peak		263 MW
	LIL Net Imports to Island		406 MWh
Wed, Mar 05, 2025	Forecast Island Peak Demand		1,475 MW

- Notes: 10. Island Demand is supplied by NLH generation and purchases, LIL Imports plus generation owned and operated by Newfoundland Power and Corner Brook Pulp & Paper (Deer Lake Power, DLP).